



# Anapurna RTR3200i LED

---

High-speed 3.2 m roll-to-roll UV LED inkjet printer for indoor and outdoor prints in a six or a four color plus white configuration.

# Anapurna RTR3200i LED



Outstanding print quality on backlit applications

**Your day-to-day roll-to-roll sign & display jobs? Hand them over to your very solid Anapurna RTR3200i LED. This dedicated roll-to-roll UV LED-curable printer, which comes in a six color version and a four color plus white version, handles a broad scope of flexible media for indoor and outdoor applications.**

**As the Anapurna RTR3200i LED is equipped with UV LED lamps, it enables you to print on a wide media mix and to save energy, costs and time.**

The four color plus white version stands out by its ability to print white in different modes, improving the opacity of the printed material as well as increasing color contrast and readability. It thus transforms selfadhesive vinyl, PVC banners or backlit film into vibrant, multi-dimensional graphics that grab attention. The Anapurna RTR3200i LED can also handle dual-roll printing. This option enables you to double your productivity when printing on smaller media — whether it is paper, vinyl or polyester.

## **High productivity thanks to the latest generation of print heads**

Incorporating the latest generation of fast-firing KM 1024i print heads, the Anapurna RTR3200i LED offers a high throughput while also achieving a high level of print quality. You will be able to maintain a high production on all substrates, satisfying your most demanding customers.

## **Wide range of media**

Agfa's large gamut of UV-curable inks enable printing on a broad range of flexible materials, including top such as fabric, canvas, self-adhesive vinyl, plastic film, paper and polyester including 100% PE eco-friendly material. The Anapurna RTR3200i LED has an excellent track record with outdoor applications such as billboards and building wraps.

## **Superior quality**

The six KM1024i heads (CMYK + white or CMYKLcLm) guarantees printing of artefact-free solids, fine text reproduction of up to 4 pt, very smooth tonal rendering and low ink consumption. In addition, this system features a robust and industrial engineered concept, fit for sustained higher workloads.

## White printing to improve opacity, color contrast and readability

The Anapurna RTR3200i LED plus white operates with Agfa's latest generation of white inks, which are highly opaque. This means you obtain a qualitative white output with low ink consumption on colored or dark substrates, as well as on transparent material for backlit or backlit/frontlit applications. Alternatively, you can use white simply as a spot color.

Also, the Anapurna RTR3200i LED plus white has the possibility to run pre- and/or post-white concurrently in one production run, greatly expanding application possibilities.



## UV LED print technology

Equipped with UV LED lamps for the curing process, the Anapurna RTR3200i LED comes with a number of economical, ecological and business-generating benefits:

- LEDs are cool to the touch and have minimal heat output, which is why they allow for a broader scope of print applications. They enable you to print on heat-sensitive substrates such as thin slides, self-adhesive sheets or stretched PVC materials, for example. In addition, limited heat generation involves a very stable bi-directional calibration.
- LED lamps can be switched on and off instantly, without any degradation of intensity. That means there is no lamp warm-up time or delay for shutter motion. The result? Faster operations and higher productivity.
- LEDs last for at least 10,000 hours each – as long as 5 years, or a printer's lifetime. They generate a consistent output throughout that period with no lamp change downtime or any consumable lamp costs.
- LEDs have a maximum energy consumption of 1 kWh per module, which leads to significant power savings.
- As UV LED lamps don't contain mercury, there is no need for mercury disposal or any related costs. Also, LEDs don't produce ozone gas that needs to be extracted by ventilation.



# Designed for the greatest possible deployment and convenience.



## 1. Reinforced beam

A robust beams sees to it that the shuttle moves about flawlessly ensuring accurate dot placement.

## 2. High-tech vacuum system

A vacuum system in four zones takes care of flawless media transport and accurate printing. Switch on the zone you need in case of small roll printing. In case of dual-roll printing, each roll gets the right vacuum applied.

## 3. Shuttle safety sensors

The Anapurna RTR3200i LED incorporates a set of shuttle safety sensors to prevent print heads from touching the substrate. This will avoid any possible damage to the precious print heads.

## 4. LED lamps

Air-cooled UV LED lights provide a huge energy savings. Due to the minimal energy output, they are ideal for thermally sensitive materials, e.g. thin slides, self-adhesive sheets, or stretched ceiling materials made of PVC fabric.

## 5. User-friendly operating system

All settings are conveniently arranged in a powerful straightforward graphic user interface on a user-friendly touchscreen and keyboard mounted on a swivel arm.

Printed files are being spooled, viewed and stored by an internal bitmap server with a HD of 1 TB for ripped images for fast spooling and secure transfer of big amount of data.

## 6. Mesh option

The mesh option allows for printing on mesh without liner, which represents an important cost benefit and broadens the printer's application scope.

## 7. Optional media loader for heavier rolls

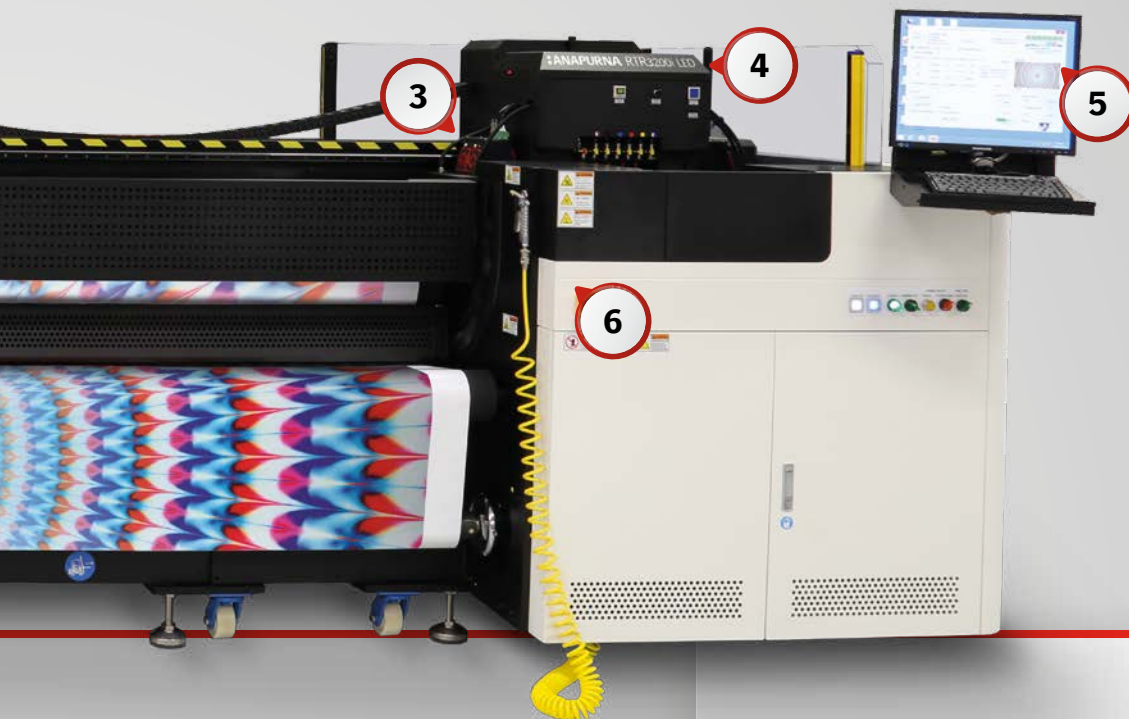
A specially designed trolley to handle heavy rolls up to 150 kg will save you a lot of trouble. Installing these heavy rolls can now be done smoothly.

## 8. Dual-roll printing to increase productivity

The dual-roll option makes it possible to install two 60 inch rolls next to each other to run two jobs at the same time. This enables you to use the printer efficiently on smaller media.

## 9. Designed for the greatest possible deployment Flawless media handling and perfect droplet control

Media loading is very straightforward with automated features such as the media-tension rollers (which keep media stretched at all times) and head height adjustment. An ionizer bar sees to it that there are no electrostatic loads on the substrate, ensuring optimum ink droplet control and thus delivering the highest print quality.

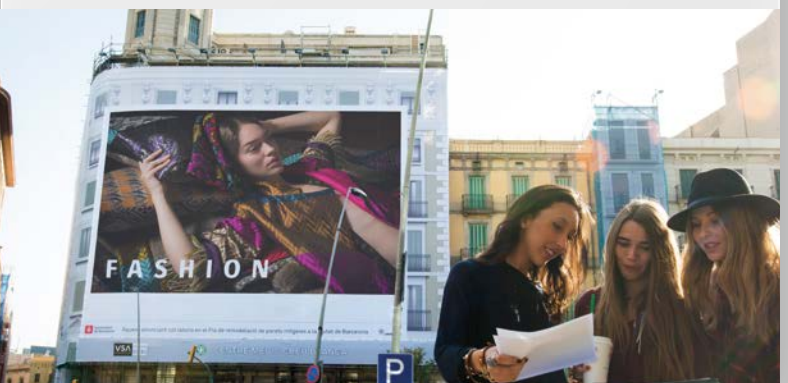


### MULTI-LAYER PRINTING

The multi-layer printing feature enables different printing modes:

- Pre-white: printing white underneath color
- Post-white: printing white on top of color
- Sandwich white: color-white-color
- High-density color: printing one color on top of another color for backlit applications

Print heads can be divided in several parts, and each part can be assigned to a different or identical image, to be used for single-run high density. This means that the Anapurna RTR3200i LED allows printing companies to print up to three layers at once, in perfect registration, in one pass. Images come alive. Backlit prints are enhanced when using high-density white on one or more layers.







# Agfa inkjet inks – always spot on

## Wide color gamut, no matter the medium

Agfa-made UV inks boast a wide color gamut and high color vibrancy in both indoor and outdoor applications. Providing outstanding adhesion—even on the most difficult substrates—these inks are your best option in terms of flexibility, image longevity and outdoor resistance. All of our UV inks—white and color—offer outstanding, stable jetting performance and deliver the same high-quality results, batch after batch.

## Agfa's UV-curable LED inks: always spot on

Relying on LED technology, our specially-formulated UV LED inks can print on heat-sensitive substrates, thus broadening the scope of possible applications. They are both customized and versatile, developed with a view of the many different media they are intended for, as well as the specifications of different print engines. Our inks for flexible media, for example, are perfectly suited for stretchable and bendable materials.

## Vivid prints, low ink consumption

Thanks to the high pigment load of our inks, ink consumption per square meter is the lowest on the market. This 'thin ink layer' pigment dispersion technology not only results in eye-catching prints; reserve the environment and saves on your budget. In short, these inks offer the best possible price/quality ratio.

## Advanced white printing and white ink management

Printing on backlit media? Creating an opaque white background? Using white as a spot color? The Anapurna RTR3200i LED supports white printing in multiple modes (e.g. pre-white, post-white, sandwich white) on both rigid and roll media. The stirring functionality keeps the white ink in motion at all times. Constant recirculation flows along the ink lines – all the way to the temperature-controlled printer heads – limiting the risk of ink resettling and lines becoming blocked or clogged.



In-house decoration – dibond



Outdoor communication – vinyl



Outdoor communication – vinyl



StoreFront web-to-print software

# Driven by Asanti workflow

The Anapurna RTR3200i LED is driven by Agfa's wide-format workflow software Asanti, which controls the entire printing process from prepress to production and finishing. As such, it simplifies, optimizes and automates as many steps as possible, offering you a high-performance solution for increased productivity.

## Accuracy and consistency

The huge variety of file types to be handled significantly slows down the processing of print jobs and often leads to errors. These difficulties are overcome with the Asanti software. As the print settings for different media are stored in a database, Asanti is able to quickly call up the appropriate specifications and apply them. Rendering, image and color quality are automated, and Asanti checks files prior to printing, ensuring layers and transparency have been handled correctly, while flagging potential issues. By dramatically simplifying the task of the operator, reducing idle time and efficiently tackling issues prior to printing, turnaround is reduced and productivity is increased.

## Intuitive GUI

The Asanti GUI works with improved visualization of the job layout and positioning: operators can see exactly what they are printing. The GUI offers access to key print parameters to make sure any last-minute changes are quick and easy to apply. Job preparation takes place independently from the Anapurna operation due to the client-server infrastructure. This complements the autonomy of the machine beautifully; ensuring operators are not tied to the printer when other tasks demand their attention.

## StoreFront

StoreFront, a comprehensive web-to-print service, is designed to handle incoming orders from the internet. Automated payment processing and error-free print preparation ensure new jobs are ready for printing in no time and with a minimum of operator intervention.



In-store communication – forex

## Integrable with PrintSphere

As a highly-advanced printer powered by Asanti, the Anapurna RTR3200i LED integrates perfectly with PrintSphere, Agfa's cloud-based service for production automation, easy file sharing and safe data storage. This integrable cloud service offers a standardized way for print service providers to automate their workflows and facilitate data exchange with customers, colleagues, freelancers, other departments and other Agfa solutions.

## Technical specifications

MODEL	Anapurna RTR3200i LED	Anapurna RTR3200i LED+ white
<b>MEDIA &amp; PRINTING SPECIFICATIONS</b>		
Media width	61-320 cm (24"-126") Optional dual-roll kit available: support for 2 rolls of 152.4 cm (60")	
Print width	Up to 320 cm Optional dual-roll kit available: support for 2 rolls of 152.4 cm (60")	
Borderless printing with mesh kit	Up to 320 cm media width (126")	
Media thickness	Minimum 0.2 mm	
Maximum roll weight (including shaft)	100 kg (150kg)	
Maximum roll diameter	36 cm (14.17")	
<b>PRODUCTIVITY</b>		
Draft mode	Up to 127 m <sup>2</sup> /h (Up to 1367 ft <sup>2</sup> )	
Express mode	76-85 m <sup>2</sup> /h (818-915 ft <sup>2</sup> )	
Production mode	37-65 m <sup>2</sup> /h (398-700 ft <sup>2</sup> )	
Standard mode	22-33 m <sup>2</sup> /h (237-355 ft <sup>2</sup> )	
High-quality mode	16-18 m <sup>2</sup> /h (172-194 ft <sup>2</sup> )	
High-definition mode	Up to 9 m <sup>2</sup> /h (Up to 97 ft <sup>2</sup> )	NA
Backlit	4-9 m <sup>2</sup> /h (43-97 ft <sup>2</sup> )	
<b>PRINT HEADS &amp; INKS</b>		
Print heads	6 Konica-Minolta KM1024i high-frequency print heads: 1024 nozzles/head, 12 pl (colors)	4 Konica-Minolta KM1024i high-frequency print heads: 1024 nozzles/head with a droplet volume of 12 pl (color) and 2 x Konica-Minolta 30 pl (white)
Ink	Anapurna 1500 RTR LED-curable inks (CMYKcLm)	Anapurna 1500 RTR LED-curable inks (CMYK) Anapurna White 1040 LED-curable ink
<b>TEXT QUALITY</b>		
Text quality positive	4 point	
Text quality negative	6 point	
<b>ENGINE WEIGHT &amp; DIMENSIONS</b>		
Dimensions (w x h x d)	5960 x 1650 x 1980 cm	
Weight	3500 kg	
Floor space	7.7 x 3 m	
<b>ELECTRICITY</b>		
Europe	380 V 3-phase star connection with neutral wire (3 x 32A) 50/60 Hz	
USA	230 V 3-phase delta connection without neutral wire (3 x 32A) 50/60 Hz	
<b>SYSTEM INTEGRATION RIP/WORKFLOW SOFTWARE</b>		
	Integrated production solution with Asanti; other RIPs on request	
	Anapurna RTR3200i LED media/ink profiles available on Asanti	Anapurna RTR3200i LED W media/ink profiles available on Asanti
<b>SAFETY APPROVALS</b>		
	CE, FCC, ROHS	




Marketed and Distributed in India by :

**MONOTECH SYSTEMS LIMITED**

3rd Floor, City Centre, No. 66, Thirumalai Road, T. Nagar, Chennai - 600 017, INDIA

Phone +91 44 2815 7928 / 7894 / 7933, Fax +91 44 2815 7973

Toll Free (India) : 1 800 102 4567 | Email : info@monotech.in | Web : www.monotech.in

 monotechsystems 
  monotechsystems 
  monotechsystem

